

A COURSE PLANNER'S QUICK GUIDE TO PDF-XCHANGE LITE

Prepared by Ken Dowling

MapSport.com.au

0410 481 677

17 February 2012

With thanks to Kathy Lilley and Jim Russell for diligent proofing.

Companion guides to this are;

- A Course Planner's Simple Guide to Achieving Best Digital Print
- Achieving Overprint in Digital Print Maps
- A Digital Press Operator's Guide to Process Orienteering Maps

PDF-XChange Lite Suite

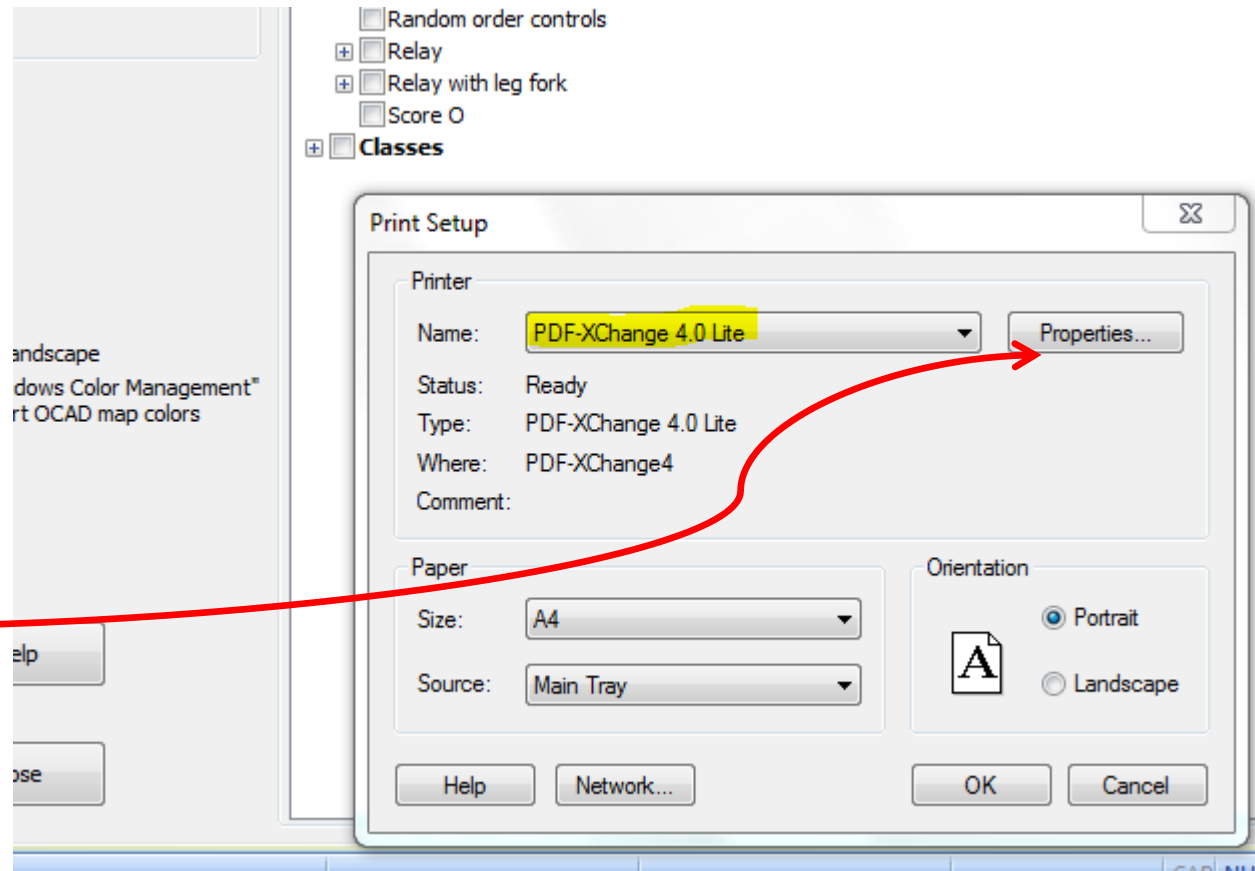
- **PDF-XChange Lite** is the umbrella product for **PDFSaver** and **PDF-Viewer**, produced by tracker-software.com
- PDFSaver is the printer driver
- PDF-Viewer is the equivalent of Adobe Reader
- User Manuals are also installed and can be accessed from the Start Menu

- PDF-XChange (Lite or Full) is one of the few generic PDF Writers that preserves the Overprint settings in PDFs produced from Condes.
- PDF-XChange Lite can also be used to print direct to a home printer. This Guide does not cover that scenario.

Print Driver Settings

When you select Print or Print Setup in Condes, select the printer driver highlighted at right.

Then select Properties.



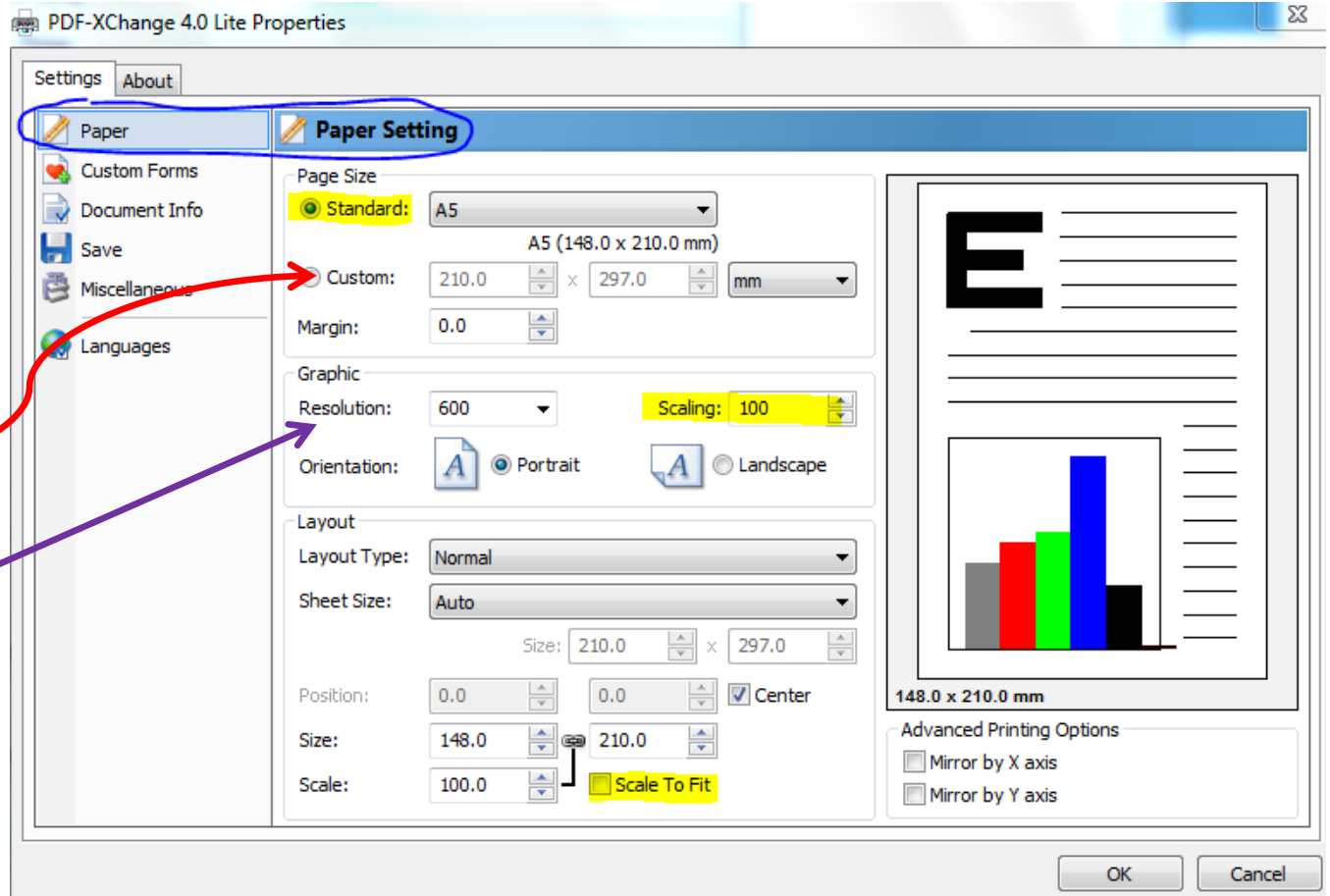
Setup - Paper Settings

Select a page size into which the map fits. It doesn't need to be exact as the printery will usually impose onto a larger sheet (SRA3 = 320x450mm).

If the map area is slightly larger than A3 (e.g. rogaine) then specify a custom size of 320 x 450mm

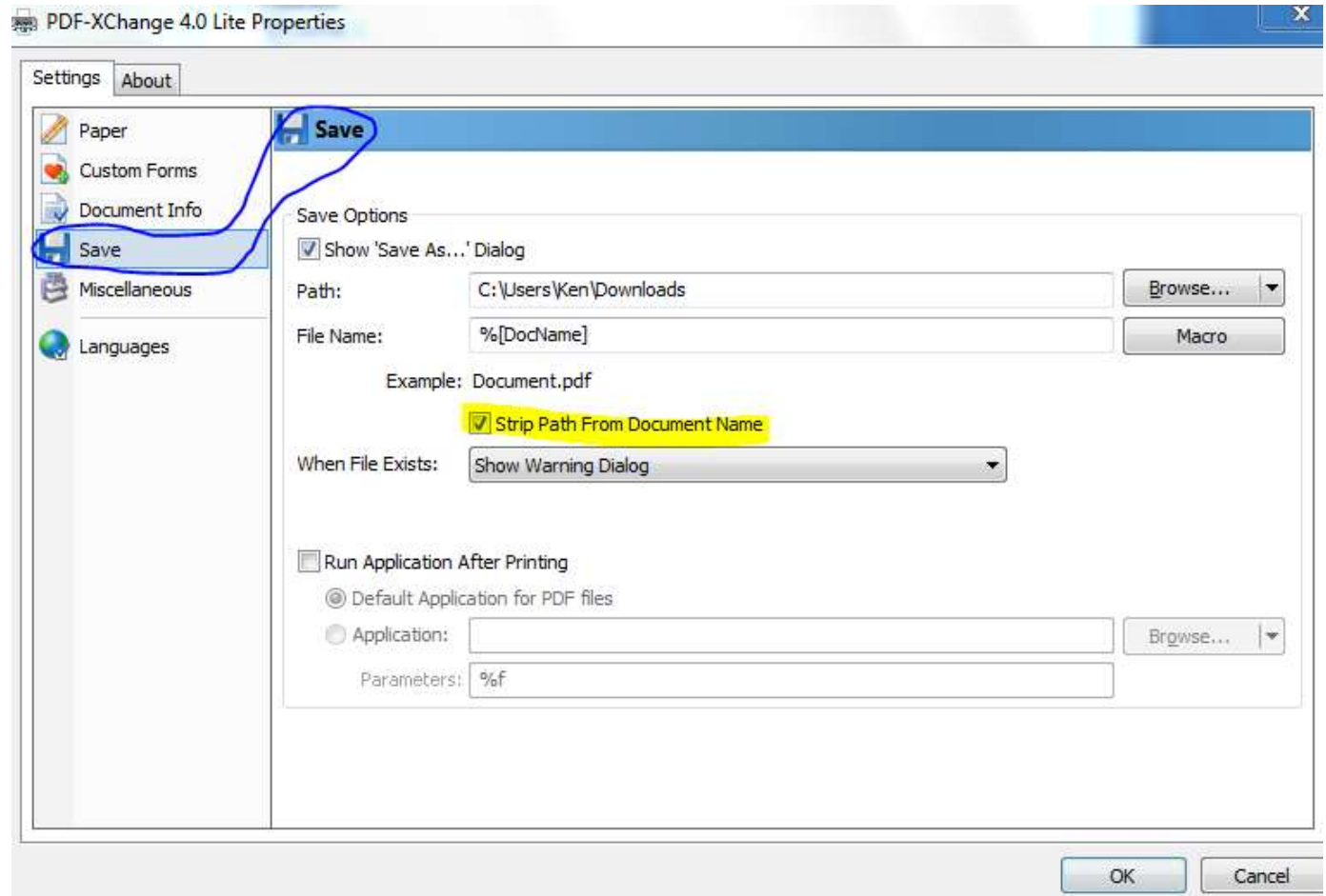
Set graphic resolution to 2400. (In theory, shouldn't need this but this app works incorrectly otherwise).

DO NOT scale ☺



Setup - Save

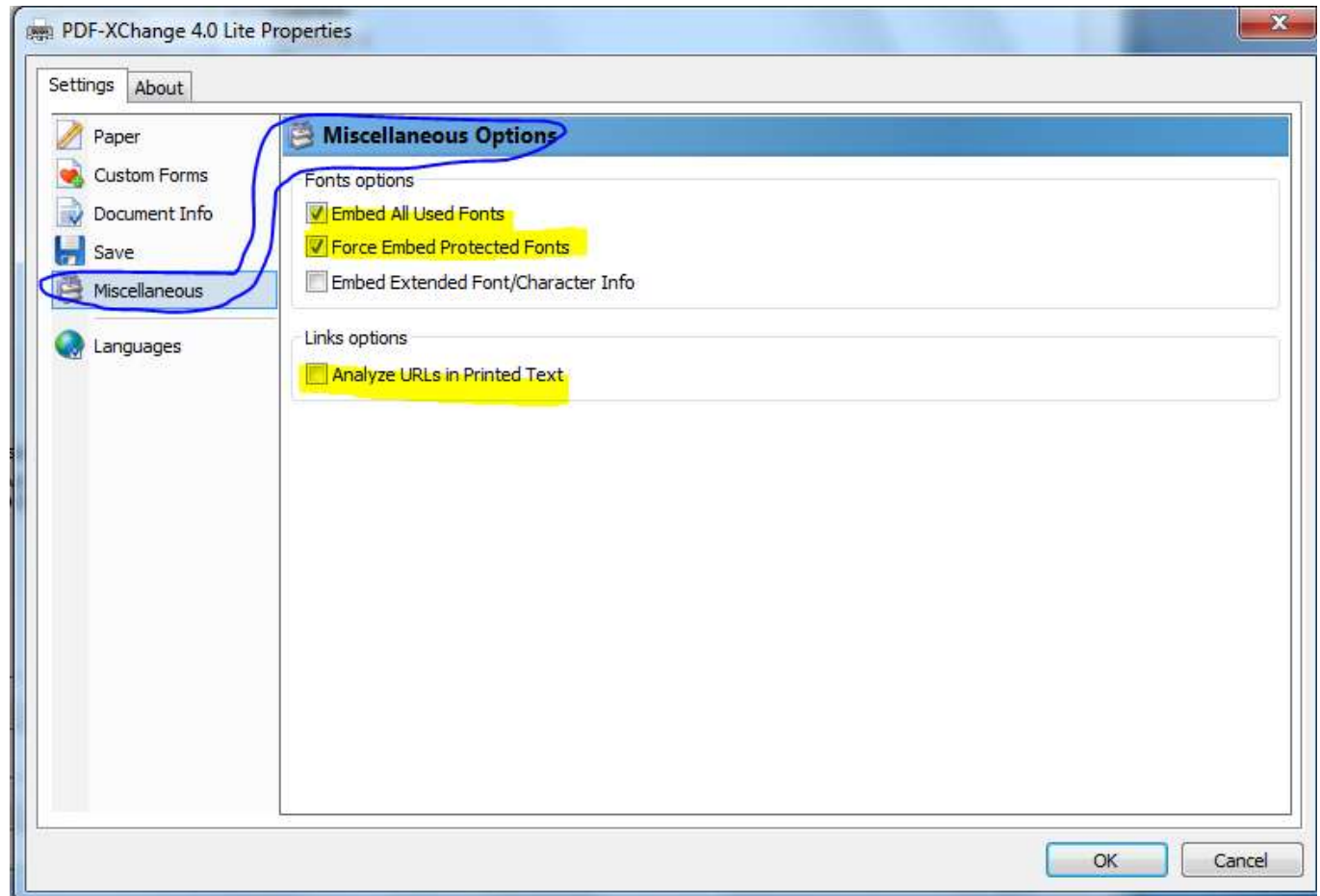
Strip path on, will avoid unmanageable file names.



Setup - Miscellaneous

To avoid your unusual fonts being substituted by something inappropriate at the printer end, embed your fonts.

Yes it increases the file size.

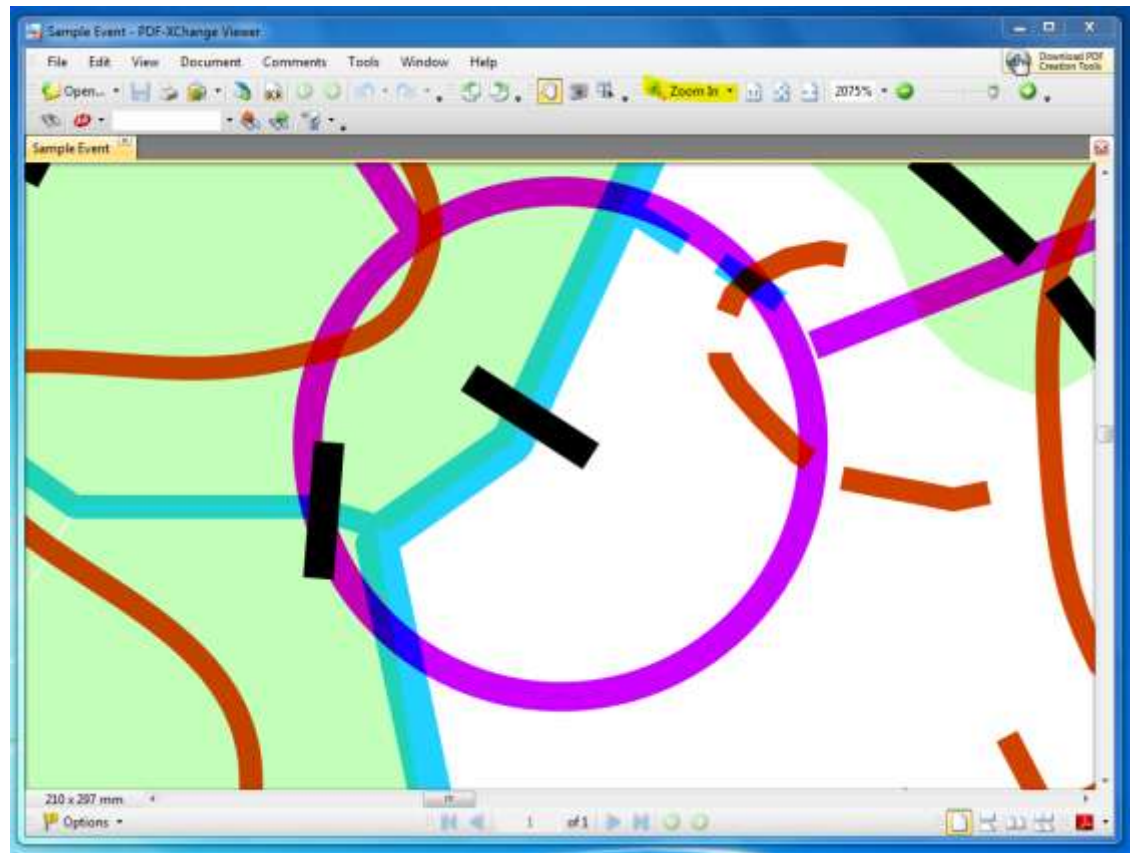


PDF-Viewer to Check for Overprint

Adobe Reader is my default PDF viewer and I would zoom in to 800 or 1600% to check for overprint.

But I found PDF-Viewer easier to use when checking for overprint. So just **right click** on the Condes PDF to select PDF Viewer this once or start PDF Viewer and then **File | Open** the Condes PDF.

The PDF Viewer top menu **Zoom In** button lets you easily drag around the control circle and then it zooms instantly. The overprint is immediately clear as in the snap at right.



Wondering why black is on top of the purple? It isn't. But it is so dense it appears to be on top.

The End

Pattern

Ken Dowling

